



Finding  
Your way. . .

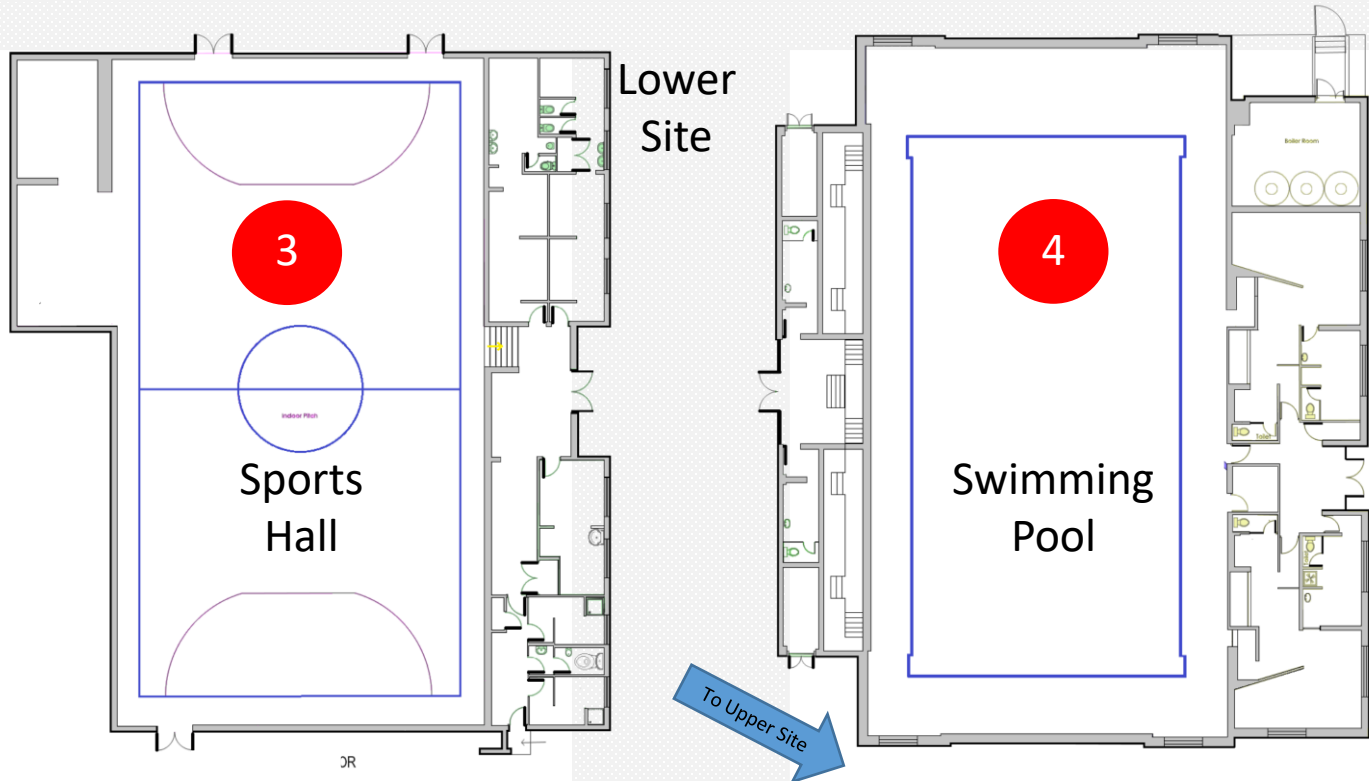
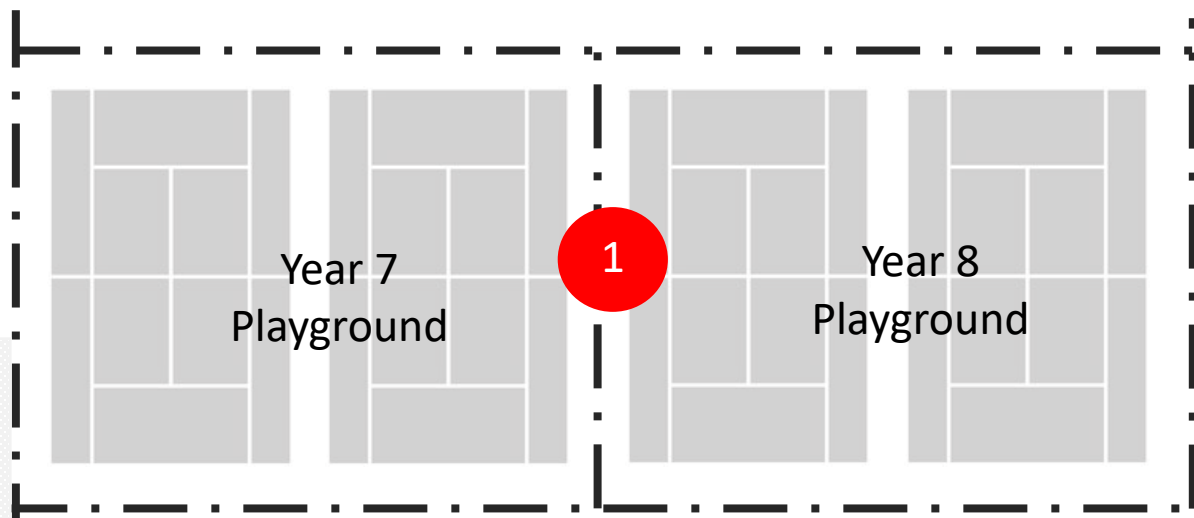
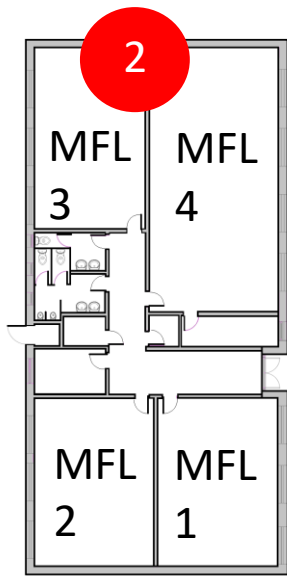
Going any where new can be a bit scary, especially when it seems so **BIG!**

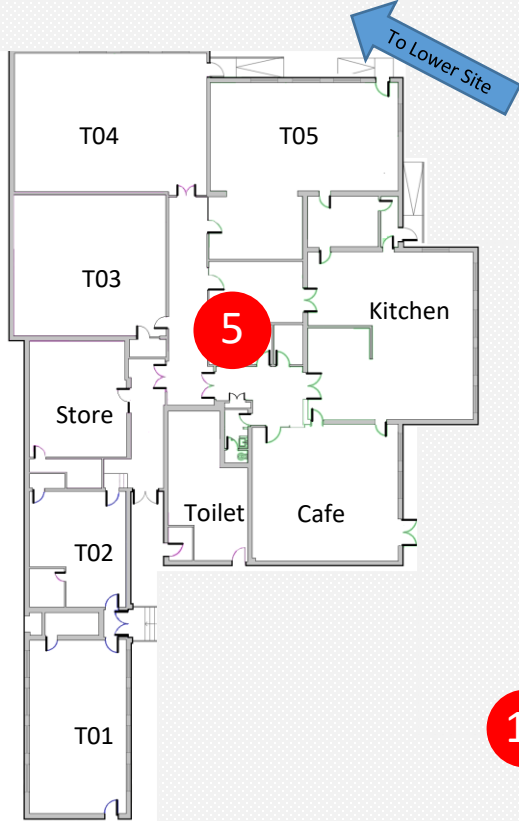
**Don't worry. . .**

Finding your way around will become easier every day and we are all here to help you.

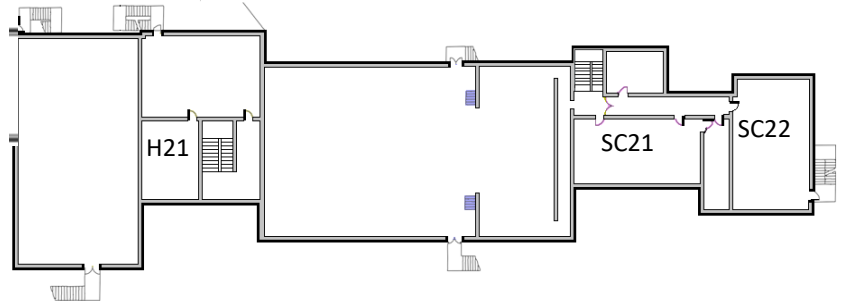


- |   |  |  |   |
|---|--|--|---|
| <b>1</b> Lower School Playground (Year 7 & 8)       | <b>5</b> DT, Food Tech and Engineering, toilets, and Café. | <b>9</b> The Meadow (Fire Assembly Meeting Point)        | <b>13</b> The South Block – History & Geography, RE & IT. |
| <b>2</b> Lower school – MFL                         | <b>6</b> Art, Drama & Music.                               | <b>10</b> The Main Playground (years 9, 10, 11, 12 & 13) | <b>14</b> The Chapel.                                     |
| <b>3</b> Sports hall and Lower school covered area. | <b>7</b> Gym, PE Changing rooms, toilets, weights room.    | <b>11</b> School Canteen                                 | <b>15</b> Reception and Administration offices. Medical   |
| <b>4</b> Swimming Pool.                             | <b>8</b> Main Hall, Business & Enterprise, Science.        | <b>12</b> The North Block – English & Maths              |   |

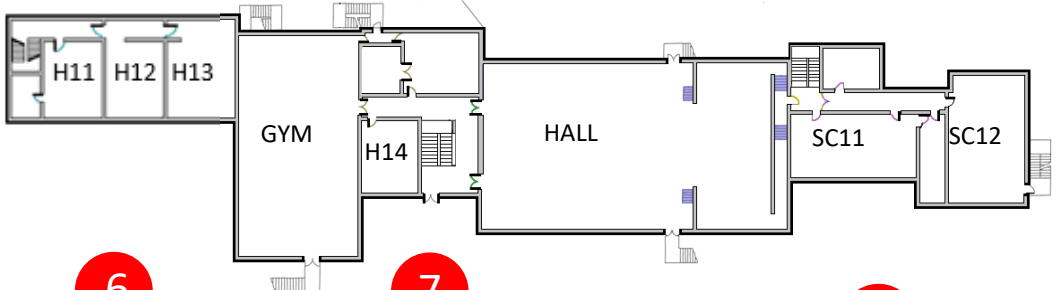




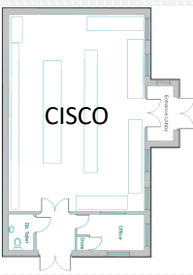
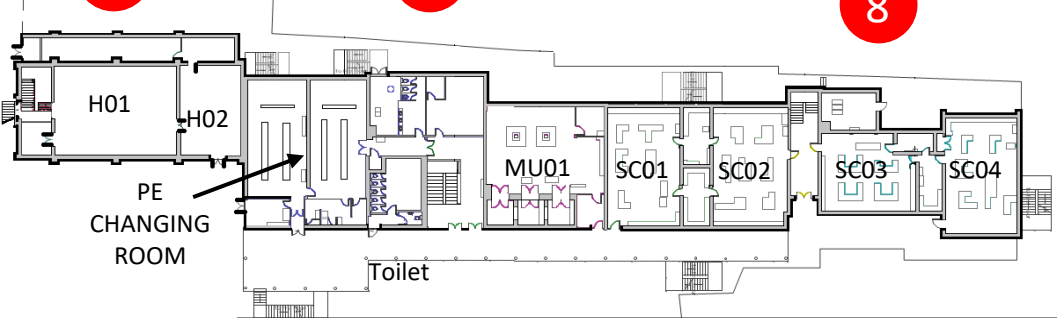
**SECOND FLOOR**



**FIRST FLOOR**

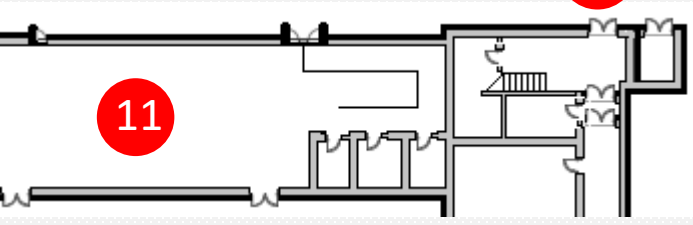


**GROUND FLOOR**



10

12

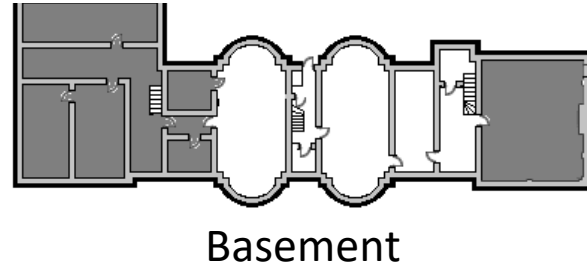
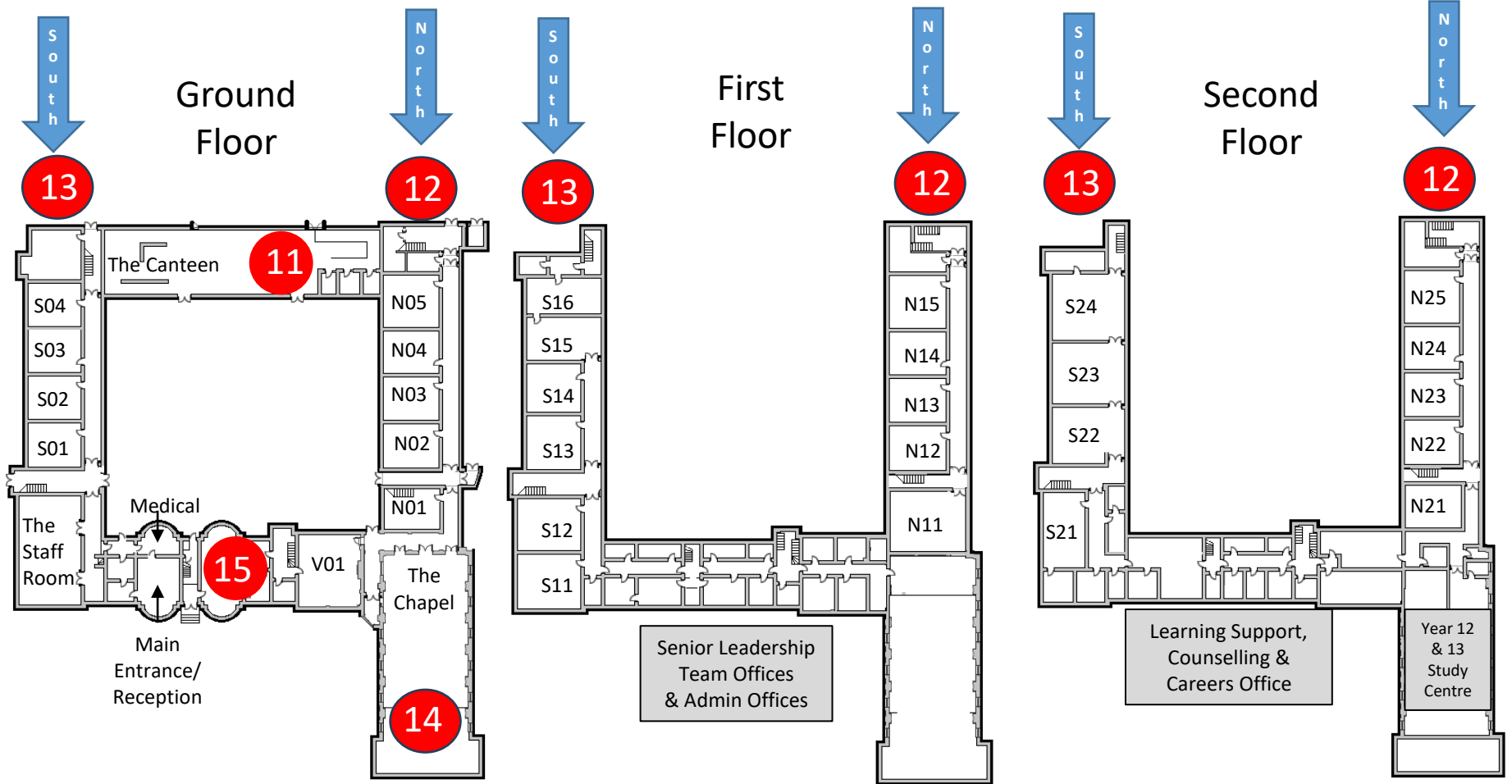


11

- 5 – DT, Food Tech, Engineering, toilets, and Café
- 6 – Drama & Music (Ground Floor)  
Art (1<sup>st</sup> Floor)
- 7 – PE changing rooms, toilets (Ground Floor)  
Gym hall, weights room (1<sup>st</sup> Floor).
- 8 – Science Block  
Main Hall (1<sup>st</sup> Floor), Business Studies (2<sup>nd</sup> Floor)
- 9 – The Meadow / Fire Assembly Meeting Point (outside)
- 10 – The Main Playground (years 9, 10, 11, 12 & 13)
- 11 – School Canteen
- 12 – North Block Playground Entrance



# The Main Building



Basement

- 11** – School Canteen
- 12** – North Block – Maths (Ground Floor)  
North Block – Maths & English (1<sup>st</sup> Floor)  
North Block – English (2<sup>nd</sup> Floor)
- 13** – South Block – Geography & History (Ground Floor)  
South Block – RE (1<sup>st</sup> Floor)  
South Block – IT (2<sup>nd</sup> Floor)
- 14** – Chapel
- 15** – Main Entrance/ Reception, Medical (Ground floor)